

Design by Polaris 2018-05 + 886-4-24517070



www.topscrew.tw

*Excellent Alloy
Solutions & Innovation*

TOP Precision Screw Experts
SCREW

鼎烽精密工業股份有限公司
Top Screw
Precision Industry Co., Ltd.

709 台南市安南區安和路三段190巷59號
No.59, Ln. 190, Sec. 3, Anhe Rd., Annan Dist.,
Tainan City 709, Taiwan
T +886-6-2474662 F +886-6-2478250
E service@topscrew.tw
www.topscrew.tw



uCloud

TOP Precision Screw Experts
SCREW

公司簡介 Company Profile

我們的團隊負責螺桿與套筒的研究、開發和製造，並提供諮詢服務。

We started with a team of professional managers and a group of experienced engineers with 25 years of experience.

鼎烽精密工業股份有限公司為橡膠機械料管螺桿品牌製造商，創立於2014年，由一群高階專業經理人和經驗豐富的工程師所組成的專業團隊，擁有25年的專業經驗，能客製化協助客戶研發設計螺桿、料管及提供客戶即時性的生產服務。

鼎烽專業團隊生產品項為：橡膠機、塑膠射出機專用之螺桿、料管及其他相關配件。能協助客戶因應市面上日新月異的橡、塑膠機，給予不同原料及素材特性最專業的解決方案，並為客戶客製化設計其專屬最佳效能的螺桿、料管，使客戶產品品質提升、良率極大化。

公司經營理念：誠信、專業、品質服務

Top Screw Precision Industry Co. Ltd was established in 2014. We started with a team of professional managers and a group of experienced engineers with 25 years of experience. Our team does the research, development and manufacture of screws and barrels, also provide consultation service.

We manufacture all kinds of screws, barrels and nozzles etc. To help customers respond to the ever-changing market and help them customize design for its best performance of the screws and barrels. So the customers can have the most efficiency product and the best product quality.

Top Screw Precision Industry Co. Ltd is a fast moving company with slow thought ideals built of strong metal-just like our products. Our employees know this is a place to build a career. Our clients know Top Screw Precision Industry is a company to put faith and stock in.

Business Concept : **Integrity-Professional-Sustainable development**



檢驗及加工設備 Inspection and Processing Equipment

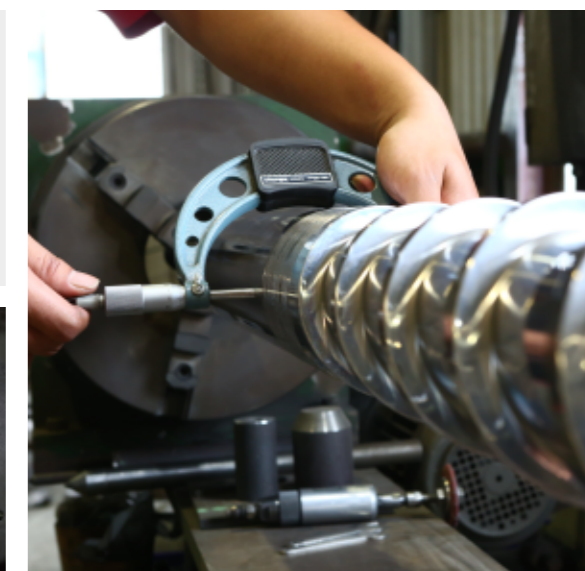
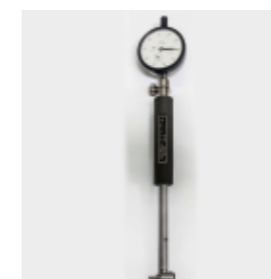
產品經由相關檢測設備的使用來追蹤並管控，對客戶所需之產品品質做最嚴格的把關。

The products are tracked and controlled through the use of related testing equipment, and the most stringent requirements are placed on the quality of products required by customers.

檢驗設備 / Quality Control & Inspection Equipment

1. 表面粗度測定儀
2. 洛氏硬度計
3. 三點式量表
4. 缸徑規
5. 外徑分厘卡
6. 游標卡尺
7. 膜厚計

1. Surface indicator
2. Rockwell hardness
3. Three point Holtest
4. Bore gages
5. Micrometer
6. Caliper
7. Thickness gauge



加工設備 / Processing Equipment

1. CNC車床
2. CNC銑床
3. 懸臂鑽床
4. 深孔機
5. 高速車床
6. 膛磨機
7. 精密傳統銑床
8. 螺桿銑床

1. Computerized numerical control lathe
2. Milling machine
3. Radial drilling machine
4. B.T.A
5. Turning high speed lathe
6. Honing machine
7. Precision milling machine
8. Screw milling machine



射出成型系列 Injection Molding Series

料管螺桿為射出成型機之核心組件，為因應不同原料的使用，鼎烽精密提供各級鋼材之料管。
The feed tube screw is the core component of the injection molding machine. In response to the use of different raw materials, Dingyi Precision provides material tubes for all levels of steel.

料管加工範圍 / Barrel Processing Range

一般氮化料管 Nitrided Barrel	內徑 \varnothing 14~ \varnothing 200mm，長度: 6000mm
雙合金料管 Bi-Metallic Barrel	內徑 \varnothing 14~ \varnothing 150mm，長度: 3000mm

料管加工鋼材 / Barrel Processing Material

等級 / Grade	材質 / Materials	應用 / Application
氮化料管 Nitrided Barrel	SACM645 ACM2	樹脂混合玻璃纖維<5% Resin with Glass-fibre<5%
C級雙合金 Bi-Metallic Barrel	碳化鎢>15% HRC 50-55	樹脂混合玻璃纖維10-20% Resin with Glass-fibre 10-20%
B級雙合金 Bi-Metallic Barrel	碳化鎢>25% HRC 55-60	樹脂混合玻璃纖維20-30% Resin with Glass-fibre 20-30%
A級雙合金 Bi-Metallic Barrel	碳化鎢>40% HRC 60-65	樹脂混合玻璃纖維35-50% Resin with Glass-fibre 35-50%



螺桿加工範圍 / Screw Processing Range

內徑 \varnothing 14~ \varnothing 200mm，長度: 4000mm

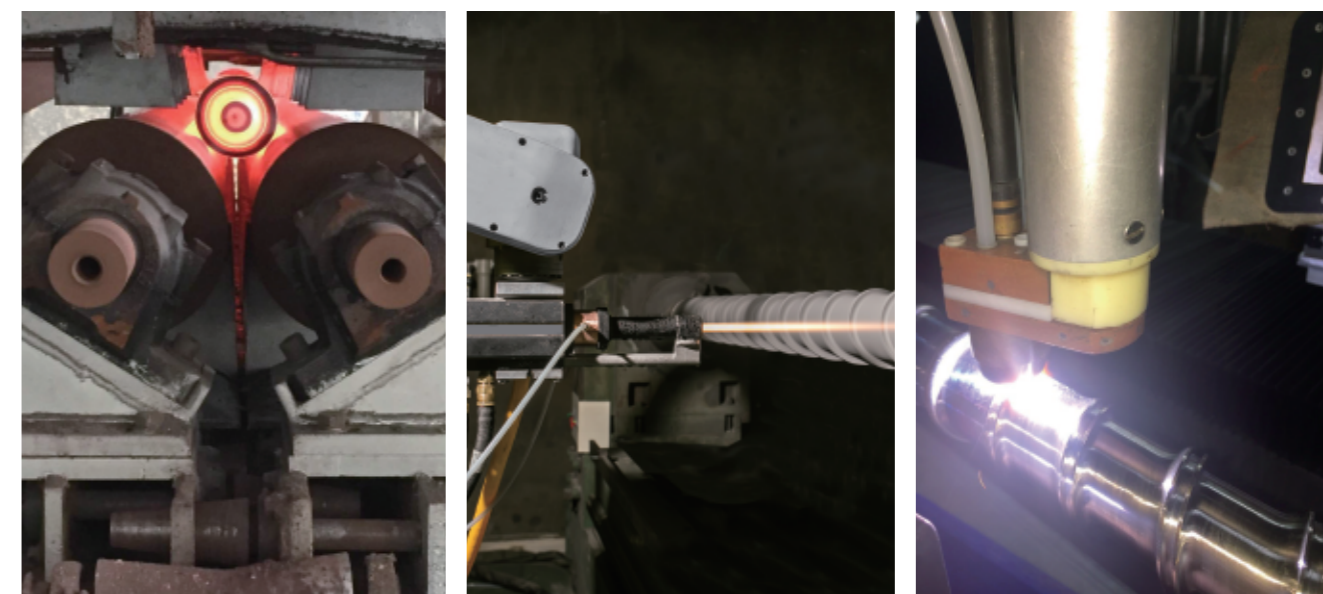
螺桿加工鋼材 / Screw Processing Material

SACM440(1.7225/4140)	SACM645(1.8509/7140)	SKD-61(1.2344/H13)
SKD-11(1.2379/D2)	1.8550(38CrAlNi7)	粉末、類粉末高速合金鋼

螺桿加工鋼材 / Screw Processing Methods

電鍍 Electro Plating	真空 Vacuum	氮化 Nitrided
鋁鈦 TiAl Coating	噴焊 / 溶射 PTA Spray Welding Screw / Spray Coating Screw	

因客戶不同的原料使用，鼎烽螺桿的設計有更快的螺桿回料時間，以及更好的溫度控制。
Due to the different raw materials used by customers, the design of our screw has faster screw feed back time and better temperature control.



橡膠機系列 Rubber Machine Series

針對橡膠原料具有彈性特性，鼎峰精密在螺桿、料管的材質選用、設計、加工，都針對橡膠原料不同之特性來做調整調效；有效提升改善客戶橡膠射出成品之品質。

To the elastic properties of rubber raw materials, We have selected, designed, and processed the material for the screw feed pipe, and has adjusted and regulated the efficiency according to the relevant characteristics, effectively improving the quality of the customer's rubber injection product.

料管加工範圍 / Barrel Processing Range

一般氮化料管
Nitrided Barrel

內徑 \varnothing 25~ \varnothing 200mm，長度: 4000mm



螺桿加工範圍 / Screw Processing Range

外徑 \varnothing 25mm~ \varnothing 200mm，長度: 4000mm

螺桿加工鋼材 / Screw Processing Material

SACM645(1.8509/7140)	1.8550(38CrAlNi7)	SKD-61(1.2344/H13)
SKD-11(1.2379/D2)	1.8550(38CrAlNi7)	

螺桿加工鋼材 / Screw Processing Methods

電鍍 Electro Plating	氮化 Nitrided
--------------------	-------------



押出機系列 Extrusion Molding Series

押出機使用之料管螺桿，為因應不同原料的使用，以及提升熔化效果並改善客戶製成的穩定性，鼎烽精密提供客製化之螺料管設計，如杜爾麥基式螺桿頭、障壁型螺桿等。

The extruder screw used in the extruder is designed to meet the needs of different raw materials, as well as to enhance the melting effect and improve the stability of the customer's production. We provides customized design, such as the Dulmage Mixer type screw head, barrier type screw and so on.

料管加工範圍 / Barrel Processing Range

一般氮化料管
Nitrided Barrel

內徑 \varnothing 14~ \varnothing 200mm，長度: 6000mm

螺桿 / Screw

鼎烽精密設計之障壁型螺桿設計，在主螺牙間加一副牙，將固體與融膠分開，可避免未熔顆粒懸浮，有較好的熔化效果，製程的穩定性較高，及壓力較高，有利於塑化。

The advantage of our design, as follows

- Increases melting efficiency due to elimination of premature solids bed break-up.
- Increases melting rates and throughput.
- Improves melt temperature control due to lower, post melt shear stresses.



押出機料管
Extrusion Machine Barrel



押出機料管
Extrusion Machine Barrel



薩克斯頓式螺桿混練頭
Saxton Mixer



多馬克螺旋式螺桿混練頭
Spiral Maddock Mixer



發泡混練頭
Forming Mixer Section

零配件

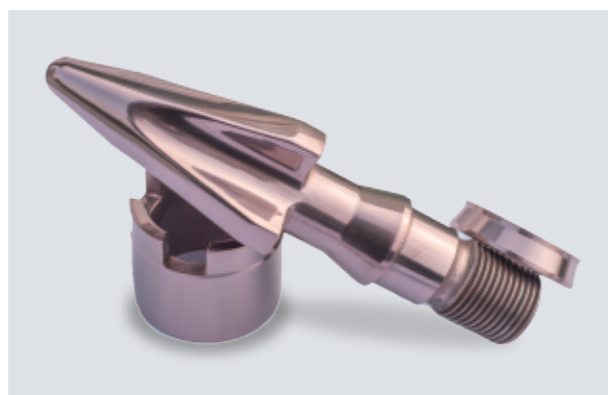
Front - End Components

設計客製化的螺料管零配件有助於提升客戶製程的效率及成品的質量、良率。鼎峰精密能協助客戶設計專屬有能的螺料管零配件

Designing customized spiral tube parts helps to increase the efficiency of finished products and the quality of finished products. Dingfeng Precision designs individual screw material parts for customers to meet the various needs of various materials and customers.

客製化零組件 / Customization Parts

- 客製化設計
 - 前端組件：
 1. 射嘴(長,短,平)
 2. 射座
 3. 尖頭組(尖頭、過膠圈、過膠介子)
- Customize Design
 - ETC. Front End Components :
 1. Nozzle(Long,Short,Flat)
 2. Barrel Head
 3. Valve (Screw Head, Check Ring, Seat Ring)



鍍膜尖頭組 Plating Valve



叉式尖頭組 Locking Valve

品名 / Product	材質 / Materials	加工 / Processing
過膠頭 Screw Head / Distributer	不鏽鋼系 SACM645(1.8509/7140) SKD-61(1.2344/H13)	電鍍 Electro plating 真空 Vacuum 氮化 Nitrided 鋁鈦 TiAl coating
過膠圈 Check Ring / Coller	粉末合金鋼類 SKD-61(1.2344/H13) SKD-11	電鍍 Electro plating 真空 Vacuum 氮化 Nitrided 鋁鈦 TiAl coating
過膠介子 Seat Ring / Washer	粉末合金鋼類 SKD-61(1.2344/H13) SKD-11	電鍍 Electro plating 真空 Vacuum 氮化 Nitrided 鋁鈦 TiAl coating
射嘴 Nozzle	SACM645(1.8509/7140) SKD-61(1.2344/H13)	電鍍 Electro plating 真空 Vacuum 氮化 Nitrided
射座 Barrel Head / End Cap	SACM645(1.8509/7140) SKD-61(1.2344/H13)	氮化 Nitrided